



S942E - \$70.00

Approx. 1.5 inches, brushed sterling silver.



S943E - \$68.00

Approx. 1 inch, brushed sterling silver.



S944E - \$70.00

Approx. 1 inch, brushed sterling silver.



S945E - \$75.00

Approx. 1.5 inches, 18mm sterling silver brushed silver hearts.



S947B - \$185.00

All sterling silver, adjusts to 8 inches, 18mm brushed silver hearts, Swarovski pearls and Preciosa crystals.



S946N - \$172.00

All Sterling Silver, 18 inches 18mm brushed silver heart and 16mm padlock and key.



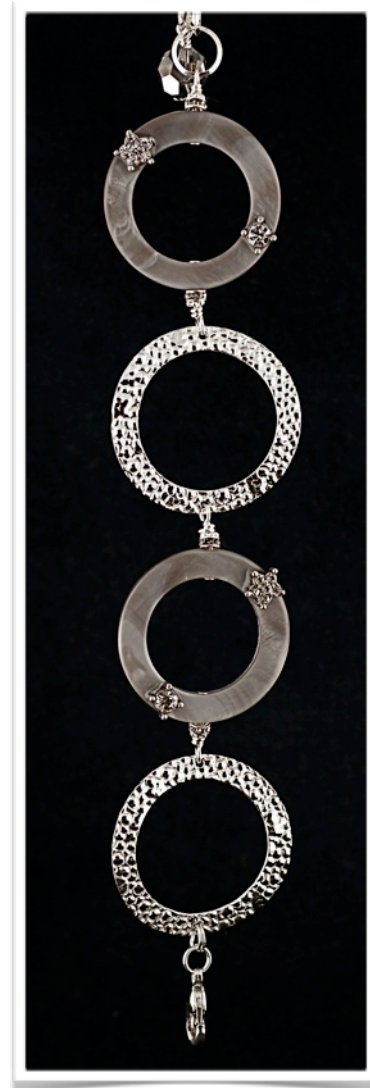
S950E - \$64.00

All sterling silver, approx. 2.5 inches, 16mm silver balls.



SA902E - \$62.00

Hammered sterling silver, approx. 1 inch.



S954B - \$103.00

7 inches extends to 8, 32mm Mother of Pearl discs and 38mm dotted sterling silver discs.



S955N - \$101.00 - LONG

30 inch designer sterling silver chain with a 38mm dotted disc with a 40mm Russian Labradorlite stone with crystal accents.



S953N - \$154.00 - LONG

Approx. 56 inches all sterling silver, 32mm Mother of Pearl discs, 20mm M.O.P flowers and 16mm M.O.P ovals and 12mm Preciosa crystals.

Colours: Clear (shown), lt. smoke and lt. topaz.



S957E - \$75.00

Approx. 1 inch tear shaped hoops with 16mm diamond cut crystal tears.

Colours: Grey (shown), Clear, lt. yellow, lilac, black, pink, navy, peridot, lt. blue and topaz.



S959E - \$70.00

Approx. 1.5 inches, 6mm Swarovski pearls, 5mm crystal fireballs.

Colours: Drk. grey (shown), topaz, pink, clear and white pearl.



S960E - \$48.00

Approx. 2 inches, 6mm drk and lt. grey pearls with 6mm Preciosa crystals.

Colours: Grey (shown), clear, pinks and topaz.



S961N - \$62.00

All sterling silver, 16 inches extends to 18. 6mm drk and lt. Swarovski pearls with 6mm Preciosa crystals and a 16mm M.O.P bottom bead accent.



S966E - \$70.00

Approx 1.5 inches, 14mm and 18mm Swarovski crystals.

Colours: lt. smoke (shown), clear, clear ab and lt. topaz.



S965E - \$75.00

Approx. 2 inches, 18mm and 20mm Swarovski crystals.

Colours: lt. smoke (shown), clear, clear ab and lt. topaz.



S962N - \$128.00 - LONG

30 inch designer sterling silver chain with the new 40mm "Pegasus" Swarovski crystal and silver plated leaf charm.

Colours: Lt. smoke (shown), Clear, lt. topaz and grey.



S929N - \$154.00 - LONG

30 inch designer sterling silver chain with a 40mm Swarovski crystal and 18mm enameled Swarovski crystal ball.

Colours: Lt. smoke (shown), Clear and lt. topaz.



S963N - \$58.00

16 inches extends to 18. 20mm Swarovski crystal, all sterling silver.

Colours: Lt. smoke (shown), clear, clear ab and lt. topaz.



S970N - \$224.00

18 inches, 14mm, 18mm and 30mm Swarovski crystals, all sterling silver.

Colours: Lt. topaz (shown), mirror, clear.



S969N - \$90.00

16 inches extends to 18. 30mm Swarovski crystal, designer sterling silver chain.

Colours: Lt topaz (shown), mirror and clear.



S940E - \$88.00

Approx. 2 inches, 18mm Swarovski crystals, all sterling silver

Colours: Lt. topaz (shown), mirror and clear.



S971N- \$141.00 - LONG

Approx. 56 inches, sterling silver chain, 8mm and 12mm Swarovski crystals, coral semi-precious stones and crystal flower accents.



S982N - \$154.00 - LONG

Approx. 56 inches, sterling silver chain, 8mm and 12mm swarovski crystals, pink jade semi-precious stones and crystal flower accents.



S973B - \$79.00

7 inches extends to 8. Sterling silver findings with 18mm pink aventurine beads and 12mm coral beads, with 5mm Swarovski roundelles. All semi-precious.



S972B - \$128.00

7 inches extends to 8. 28mm by 40mm sterling silver oval, 12mm coral beads and 8mm pink Swarovski fireballs.



S9479B - \$119.00

Extends to 8 inches, 8mm, 10mm and 12mm Swarovski pearls and crystals.

Colours: Pink (shown), Clear and pearl, lt. topaz, purple, lt and drk grey.



S974B - \$84.00

Approx. 7.5 inches, 12mm Swarovski crystals and 18mm pink dyed turquoise beads.

Colours: Pink (shown), Aqua, white with clear crystal and black.



S921E - \$70.00

30mm sterling silver oval hoops, 64 Swarovski crystals.

Colours: Graduated pink (shown), grad. aqua, grad. purple, grad. clear/grey/black and all solid colors.



S981E - \$53.00

22mm Swarovski tears with 5mm crystal fireballs. Sterling silver lever backs.

Colours: Pink (shown), lt. smoke and lt. topaz.



S968E - \$75.00

Approx. 2 inches, 5mm crystal fireballs with 6mm and 18mm Swarovski crystals. Sterling silver.

Colours: Pink (shown), lt. smoke, aqua, purple, clear and lt. topaz.



S980E - \$55.00

22mm Swarovski tears with sterling silver leaf accents.

Colours: Pink (shown), lt. smoke and lt. topaz, clear, clear ab, aqua, purple, and yellow.



S975E - \$75.00

Approx. 2 inches, 18mm Swarovski tears with 28mm irregular shaped sterling silver hoops. All sterling silver

Colours: Pink (shown), lt. smoke and lt. topaz, clear, clear ab, purple and aqua.



S933N - \$149.00 - LONG

36 inches, 8mm rhinestone chain, gunmetal plating over brass.

Colours: Clear, aqua, pink, topaz (all shown).



S934B - \$31.00

7 inches extends to 8. 8mm rhinestone chain, gunmetal plating over brass.

Colours: Clear, aqua, topaz and pink (all shown).

VERY PRETTY WHEN STACKED IN 3's.



S983N - \$158.00 - LONG

Approx. 56 inches, sterling silver chain, 10mm swarovski crystals, 12mm crystal fireballs, BEAUTIFUL! 16mm genuine top quality turquoise beads and 18mm aventurine semi-precious beads.



S986B - \$136.00

7 inches extends to 8. 28mm by 40mm sterling silver oval, 12mm crystal fireballs, BEAUTIFUL! 16mm genuine top quality turquoise beads.



S985E - \$44.00

10 mm round silver ball stud earrings with BEAUTIFUL! 16mm genuine top quality turquoise beads.



S989BN - \$99.00

7 inches extends to 8. 18mm sterling silver bead, 4mm aqua Swarovski roundelles and blue opal beads.

Colours: Blue opal(shown), Pink dyed turquoise.



S921E - \$70.00

30mm sterling silver oval hoops, 64 Swarovski crystals.

Colours: Graduated aqua(shown), grad. pink, grad. purple, grad. clear/grey/white and all solid colors.



S992N - \$172.00 - LONG

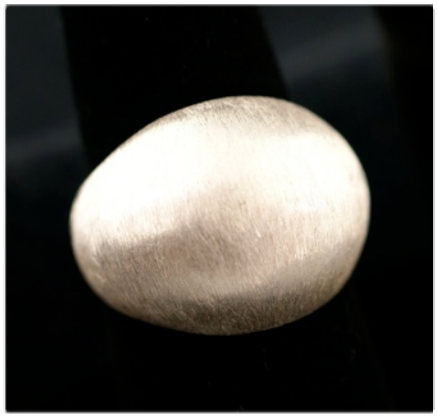
Approx. 56 inches, sterling silver chain, 18mm rectangle crystals, 16mm shell open and closed ovals, 10mm crystal fireballs and 12mm Swarovski crystals.



S993E - \$88.00

Approx. 2 inches, 18mm Swarovski crystals, all sterling silver

Colours: Blue (shown), lt. topaz, mirror, lt. smoke and clear.



R0901 - \$53.00

Brushed sterling silver.

Sizes: 6, 7, 8, 9.



R0902 - \$53.00

Brushed sterling silver with a rim of clear Swarovski crystals, surface is approx 1.5 x 1.5 inches

Sizes: Extends from 6 to 9.



R0903 - \$42.00

Brushed sterling silver.

Sizes: 6, 7, 8, 9.



R0904 - \$75.00

Brushed sterling silver.

Sizes: 6, 7, 8, 9.



R0905 - \$46.00

High polished sterling silver.

Sizes: 6, 7, 8, 9.



R0906 - \$57.00

High polished sterling silver.

Sizes: 6, 7, 8, 9.



R0908 - \$75.00

Cubic Zirconia and sterling silver.

Clear Sizes: 6, 7, 8, 9.

Pink Sizes: 6, 7, 8.



R0909 - \$83.00

20mm cubic zirconia and sterling silver.

Sizes: 6, 7, 8, 9.



R0910 - \$99.00

20mm cubic zirconia and sterling silver.

Sizes: 6.5, 7, 7.5, 8.

Rings are shipped within 3 days if in stock and 6 to 8 weeks if not.



R0911 - \$90.00

20mm cubic zirconia and sterling silver.

Sizes: 6, 7, 8, 9.



R0912 - \$66.00

16mm cubic zirconia and sterling silver.

Sizes: 6, 7, 8, 9.



R0913 - \$105.00

14mm cubic zirconia and sterling silver.

Sizes: 7



R0914 - \$97.00

16mm cubic zirconia and sterling silver.

Sizes: 7.5, 8.5



R0915 - \$70.00

20mm cubic zirconia and sterling silver.

Topaz Sizes: 7.
Clear Sizes: 7, 8.

Rings are shipped within 3 days if in stock
and 6 to 8 weeks if not.